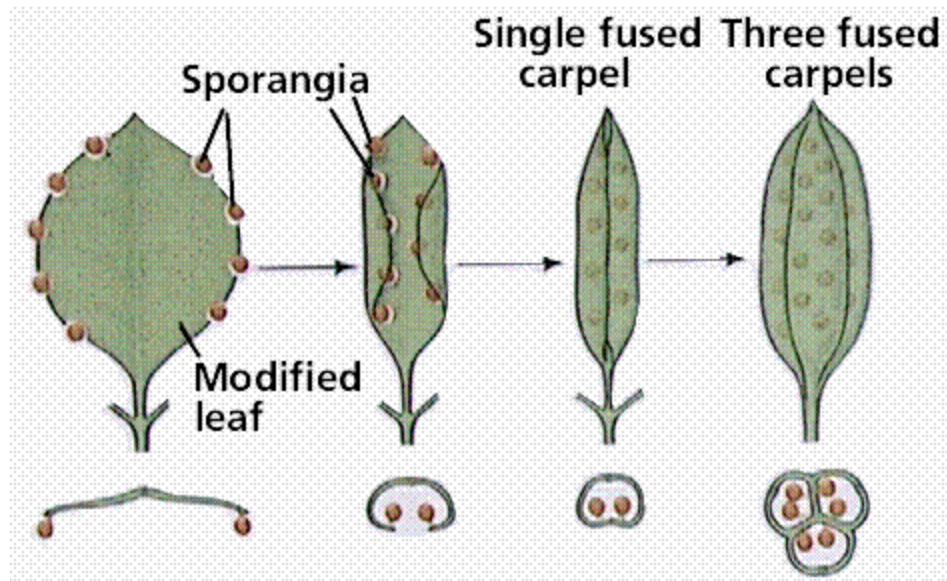
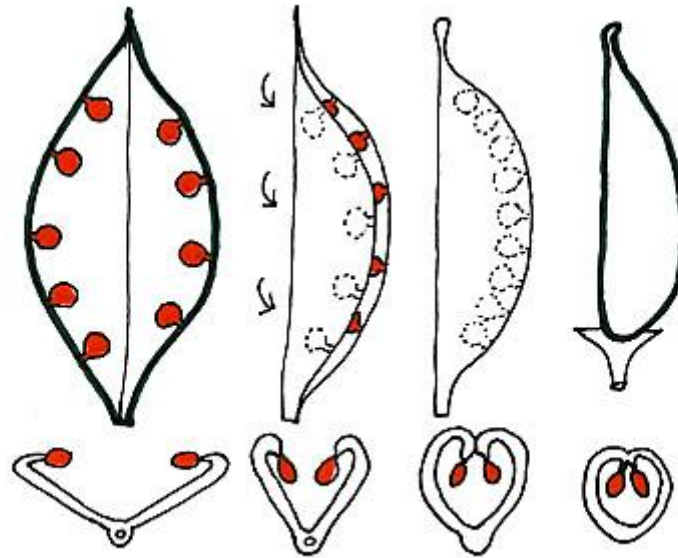


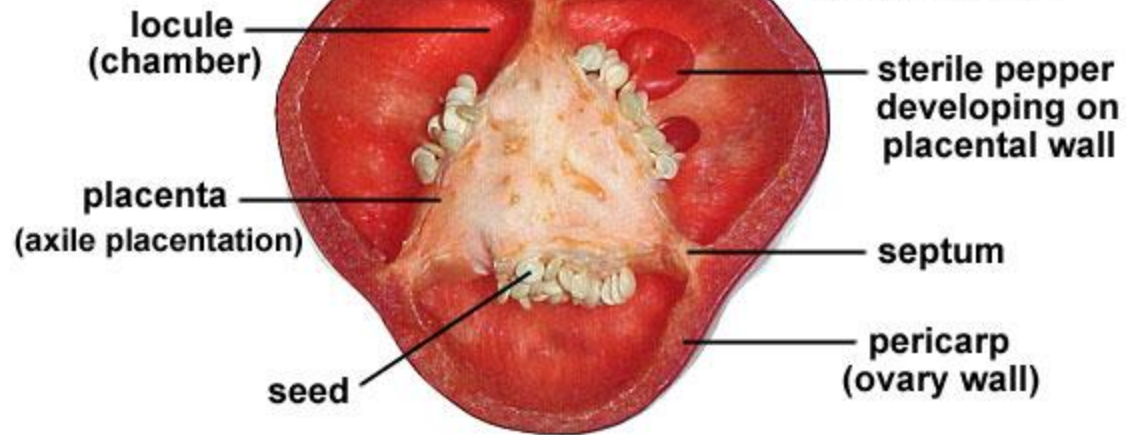
CS20 – Lecture *i*

- 1 **How to play with your food**
- 2 **The birds and the bees**
- 3 **An interlude**
- 4 **Home sweet home**

All floral parts are modified leaves.



© W.P. Armstrong 2002



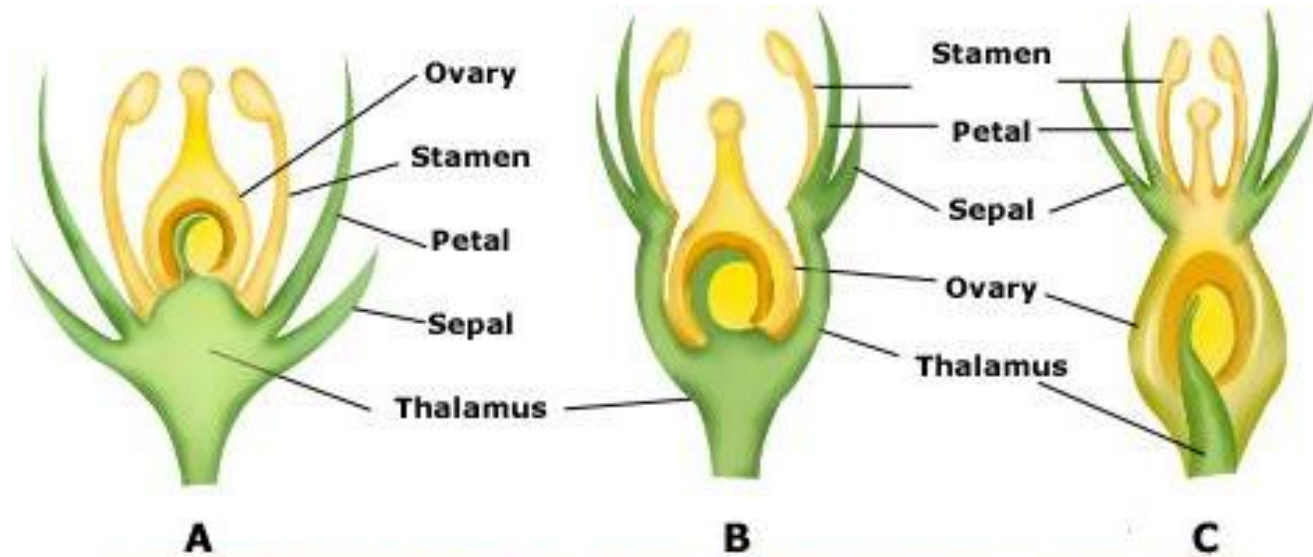
x.s. of bell pepper ovary
(*Capsicum annuum*)











Insertion of floral parts on thalamus, A. Hypogynous (China rose)
 B. Perigynous (Rose), C. Epigynous (strawberry).





Benjamin
Cummings



Photograph by Jonathan Blair

© 2002 National Geographic Society. All rights reserved.

The Big Bloom
National Geographic magazine, July 2002











© Merlin D. Tuttle/Bat Conservation International/Photo Researchers, Inc.



Benjamin
Cummings



Photograph by Jonathan Blair

© 2002 National Geographic Society. All rights reserved.

The Big Bloom
National Geographic magazine, July 2002





Organism	Flower color	Scent	Other
Beetle	White or dull	Fruity/spicy	Protected ovaries
Bee	Blue or yellow	Misc	Landing platforms
Moth	White or dull	Sweet	Nocturnal
Butterfly	Colorful	Scented	Diurnal
Birds	Colorful	None	Copious nectar
Bats	Dull	Fruity	Hang down
Wind	Dull	None	Copious pollen



*'sweet, rich scent
produced at sunset
and overnight'*

‘Hummingbird Hawk-moth’

